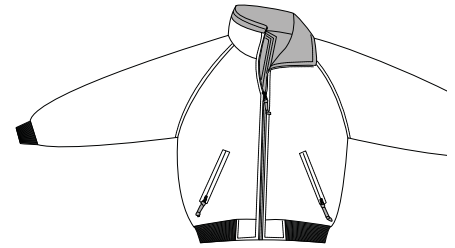
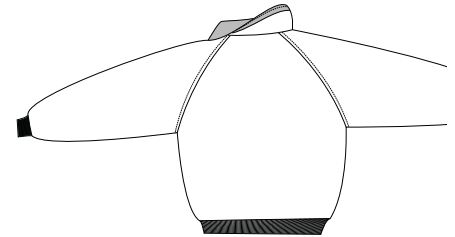


Challenger Jacket

PORT AUTHORITY®



Front



Back

J754

- * Durable Teklon® Nylon shell * Poly filled body w/ heavyweight fleece lining
- * Nylon-lined sleeves for easy on/off * 1 x 1 rib knit trim at waistband and cuffs
- * Lower slash pockets and two inside chest pockets w/ zip closures
- * Port Pocket™ for easy access to left chest & full back embroidery

Care Instructions:
Machine wash cold, gentle cycle.
Tumble dry low.
Cool iron if needed.
Do not bleach.

Colors

	Goldenrod**/ True Navy		True Hunter/ True Navy*
	Khaki/ True Black		True Navy/ Grey Heather*
	Maroon/ True Black		True Navy/ True Navy
	True Black/ Grey Heather		True Red/ True Navy
	True Black/ True Black*		True Royal/ True Navy
	True Black/ Ivy Green		

Finished Measurements in Inches										
Size	XS	S	M	L	XL	2XL	3XL	4XL	5XL	6XL
Chest	22.5	24	25.5	27	28.5	30	31.5	33	37	38.5
Length	26	26.5	27	27.5	28.5	29	30	30	32.5	33.5
Sleeve	33	34.5	36	36.5	37	39	39.5	40	42	42.5
Collar	4.25	4.25	4.25	4.25	4.25	4.25	4.25	4.25	4.25	4.25
Areas for Decoration	L/R Chest, Full Back			Port Pocket™			Left Underarm			

Collar measured center back seam to top hem. Chest width measured 1" below arm hole.
Body length measured from back neck seam to hem. Sleeve length measured from center back seam to hem.

Please Note:
Colors shown are approximate and for reference only. For closest match see PMS colors, or for exact match, returnable samples and grommeted samples are available.
*Available in tall sizes
**Color not recommended for silk screening or heat transfer

Color Chart									
Colors	Goldenrod	Khaki	Maroon	Steel Gray	True Black	True Hunter	True Navy	True Red	True Royal
Textile PMS	14-0955TC	18-0617TC	19--1627TC	No Match	19-4005TC	19-5917TC	19-4025TC	19-1761TC	18-3949TC
General PMS	7408C	7531C	504C	432C	426C	5535C	533C	201C	2728C
Accent	Grey Heather	True Black	True Navy	Ivy Green					
Textile PMS	No Match	19-4005TC	19-4025TC	No Match					
General PMS	No Match	Process Black	533C	450C					