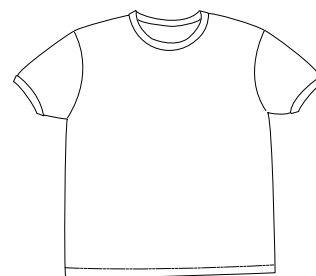
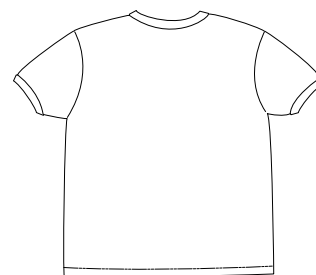


Tall 100% Cotton Essential T-Shirt

PORT | AUTHORITY®



Front



Back

PC61T

Designer Notes: With its incredible range of colors - not to mention its tremendous value - you're sure to find an Essential Tee that's perfect for your group.

Fabric/Style: Heavyweight 6.1-ounce, 100% cotton constructed with an exacting eye for quality, shoulder-to-shoulder taping, coverseamed neck, double-needle stitched hem.

Care Instructions:
Machine wash with like colors. Do not bleach.
Tumble dry low. Cool iron if needed.

Finished Measurements in Inches

Size	LT	XLT	2XLT	3XLT	4XLT
Width	22	24	26	28	30
Length	33	34	36	37	38
Sleeve	20.25	21.75	23.25	24.75	26.25

Width measured 1" below armhole. Length measured from high point of shoulder to bottom hem.
Sleeve measured from center back neck seam to cuff.

Please Note:
Colors shown are approximate and for reference only. For closest match see PMS colors, or for exact match, returnable samples and grommets are available.

Colors

Light Blue	Lime	Athletic Heather	Yellow	White	Ash
Black	Red	Royal	Sand	Orange	Navy

Color Chart

Colors	Light Blue	Lime	Athletic Heather	Yellow	White	Ash
Textile PMS	No Match	No Match	No Match	No Match	No Match	No Match
General PMS	543 C	367 C	435 C	127 C	663 C	Warm Grey 1 C
Colors	Black	Red	Royal	Sand	Orange	Navy
Textile PMS	No Match	No Match	No Match	No Match	No Match	No Match
General PMS	Process Black C	200 C	661 C	4525 C	172 C	296C